

MEDIA KIT 2025

PROMOTIONAL SPACE ——— ADVERTISEMENT PANEL ——— DIGITAL MEDIA

STANDARD RATE



PROMO SPACE

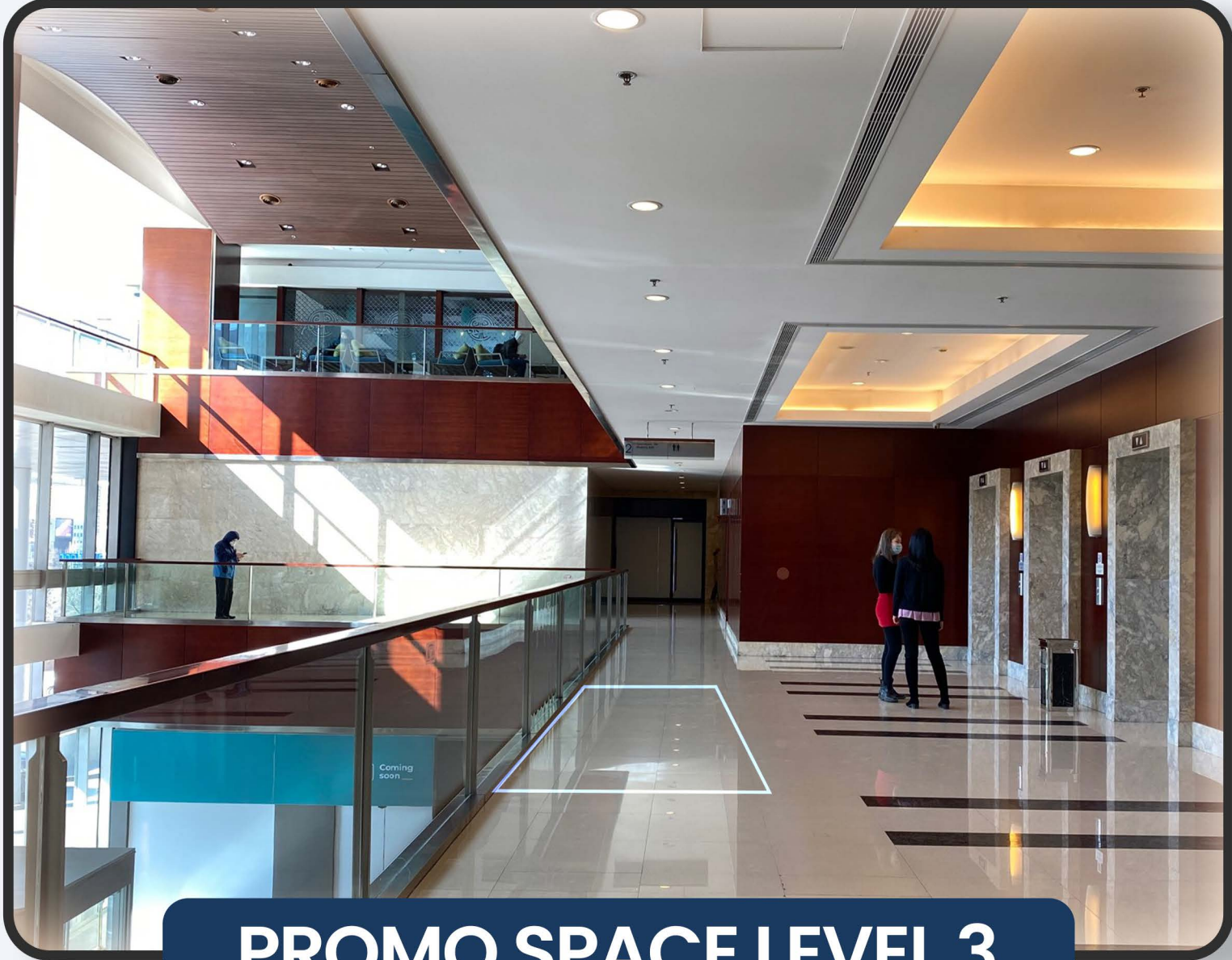




PROMO SPACES



EXTERNAL PROMO SPACE



PROMO SPACE LEVEL 3

	LOCATION Courtyard area	DIMENSION 13M x 35m
	PER WEEK 2'500'000MNT	PER MONTH 7'000'000MNT

	LOCATION Level 3 (in front of 6 passenger lifts)	DIMENSION 2.4M x 2M
		PER DAY 500'000MNT

VAT IS NOT INCLUDED

OUTDOOR





OUTDOOR/ STANDARD RATE 2024

ARCH LIGHT BOX



LOCATION

Outdoor Arch

DIMENSION

3.20M x 5.40M

PER MONTH

850'000MNT



VAT IS NOT INCLUDED

INDOOR



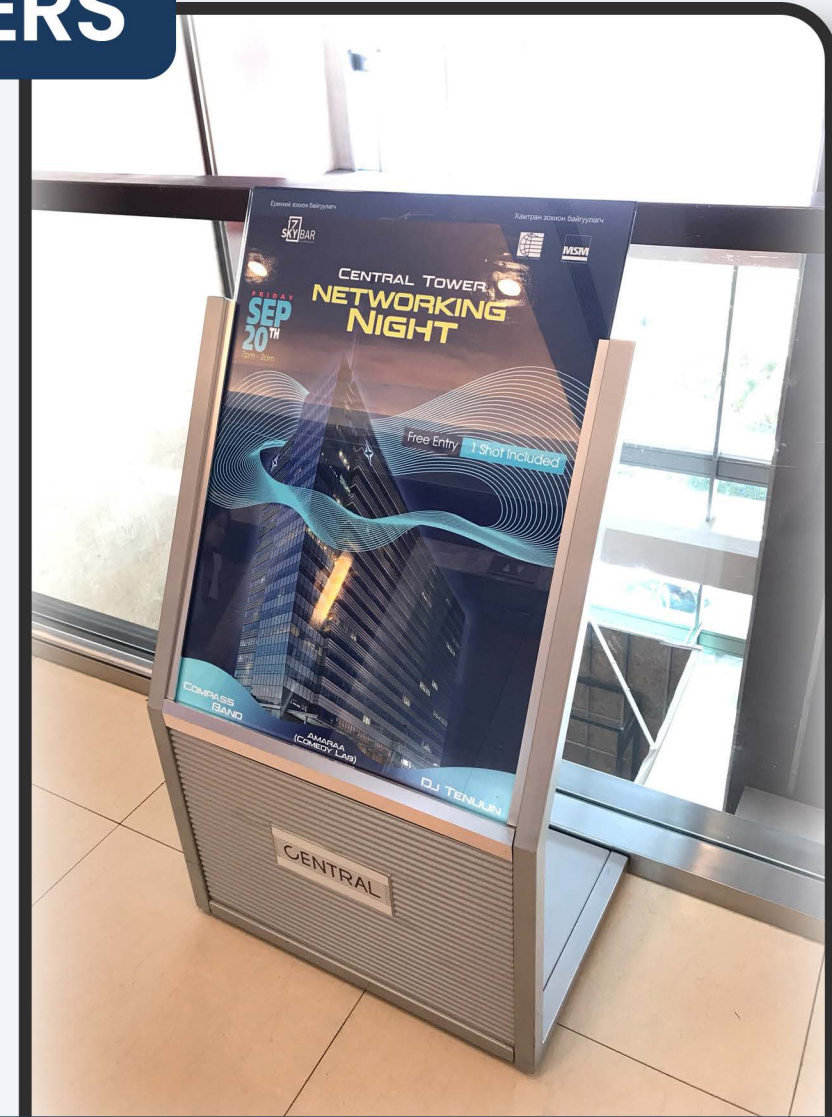


AD PANEL – LIGHTBOX & STICKERS



GLASS PANEL 1,2

LOCATION	DIMENSION	PER WEEK
Level 2 , (in front of 202C) Level 2 , (in front of 205A)	5.88M x2.59M	175'000MNT



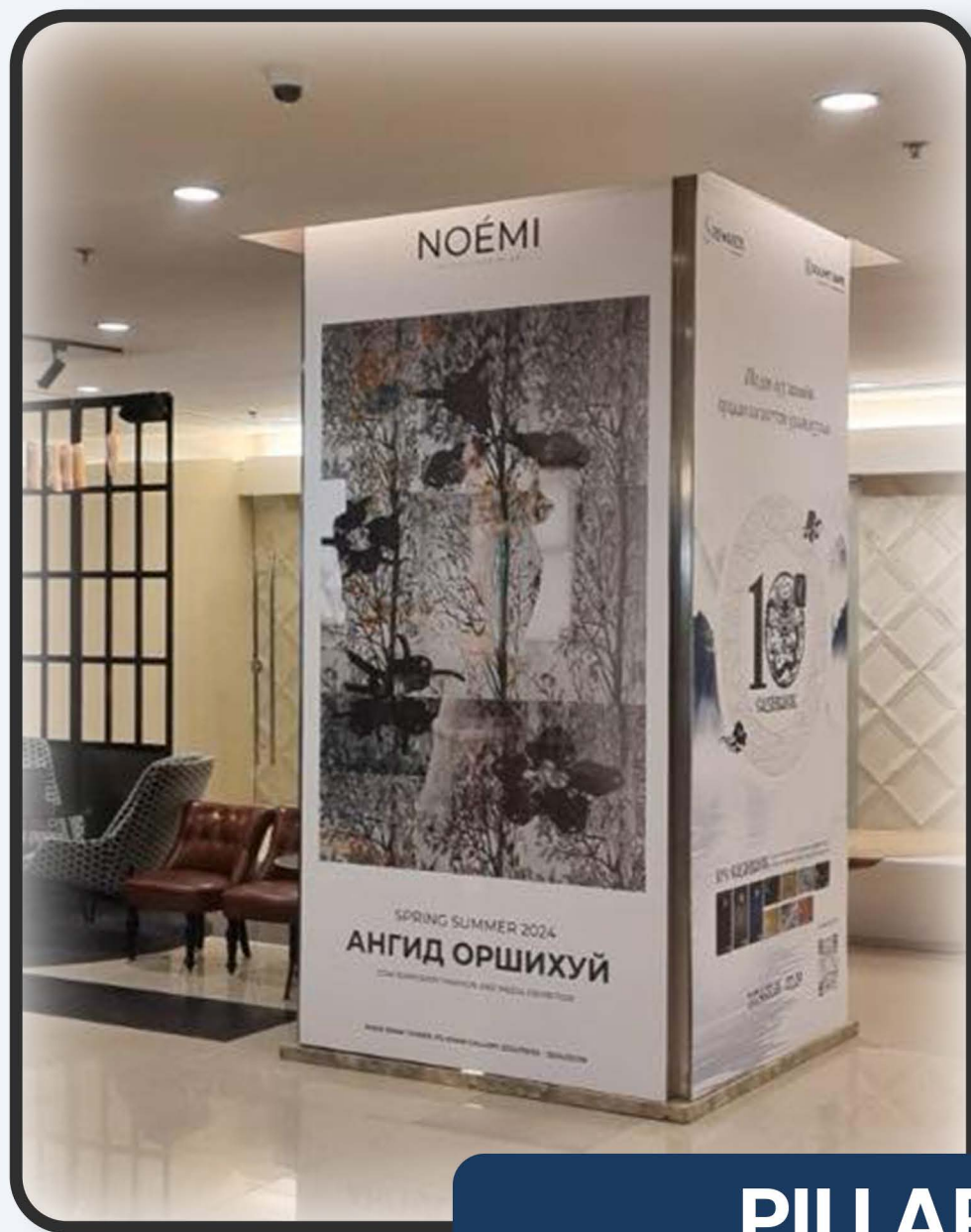
STAND (SET OF 5)

LOCATION	DIMENSION	PER WEEK
Level 1 (near Mall Entrance) Level 1 (near Tenant 101) Level 2 (opposite Tenant 202B) Level 2 (near Tenant 209) Level 2 (in front of lift) Level 3 (in front of lift)	0.54M x 0.74M	150'000MNT

VAT IS NOT INCLUDED



AD PANEL – LIGHTBOX & STICKERS



PILLAR WRAP



📍 LOCATION	DIMENSION	PER WEEK
Level 1 (Set of 2)	1.45M x 3.95M	275'000MNT
Level 2 (1 side-next to Martelli)	1.45M x 3M	175'000MNT
Level 3 (Set of 2-Both sides of Coffee Fellows)	1.45M x 3M	275'000MNT
Level 3 (1 side-next to Quartz restaurant)	1.45M x 3M	175'000MNT



LIGHTBOX

📍 LOCATION	DIMENSION	PER WEEK
Level 2 (next to Axe Salon)	3.6M x 1.5M	250'000MNT
Level 2 (in front of UGG)		
Level 2 (in front of Cashmere WS)	3.6M x 1.5M	250'000MNT
Level 3 (in front of CU)		
Level 3 (next to CUBES restaurant)		

VAT IS NOT INCLUDED



AD PANEL – LIGHTBOX & STICKERS



WALL STICKER "B1"



WALL STICKER

📍 LOCATION
Level B1
(next to the passenger lift)

DIMENSION
3M x 2.8M

PER WEEK
200'000MNT

📍 LOCATION
Leve 2 (next to the passenger lift)
Leve 3 (next to the passenger lift)

DIMENSION
3M x 3M

PER WEEK
250'000MNT

VAT IS NOT INCLUDED



DIGITAL SCREEN

DIGITAL SCREEN (PORTRAIT)



LOCATION

Level 1,
Lobby Area

DIMENSION

1080x1920px

PER DAY

25'000MNT



VAT IS NOT INCLUDED



REVOLVING DOOR STICKER



LOCATION

Level 1
(Entrance Door)

PER WEEK

350'000MNT



VAT IS NOT INCLUDED



INDOOR/ STANDARD RATE 2024

BANNER

RAILING BANNER



LOCATION

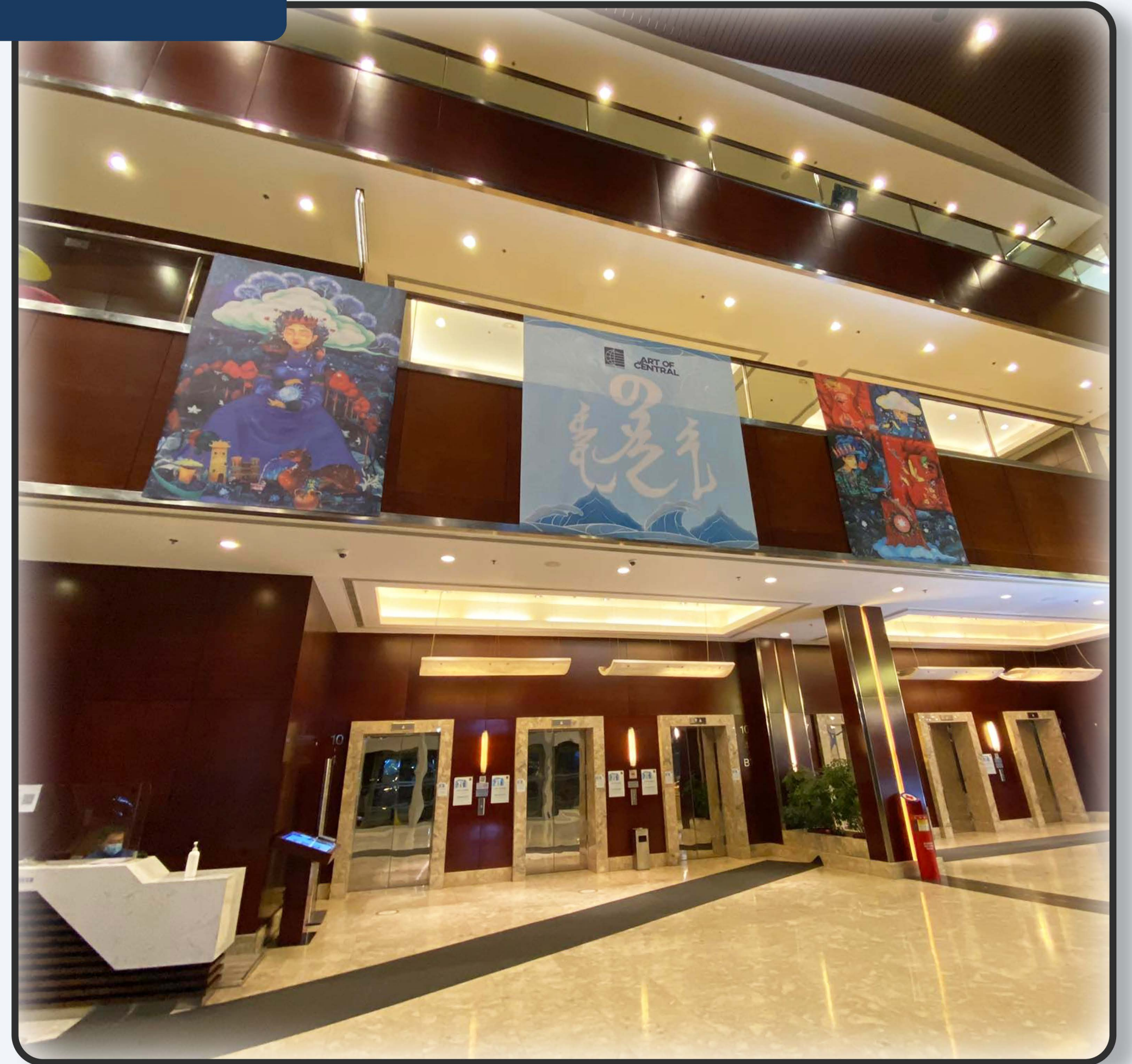
Level 2,
Glass Railing Area

DIMENSION

22.1M x 3M

PER WEEK

1'200'000MNT



VAT IS NOT INCLUDED



PHOTO & VIDEO SHOOT

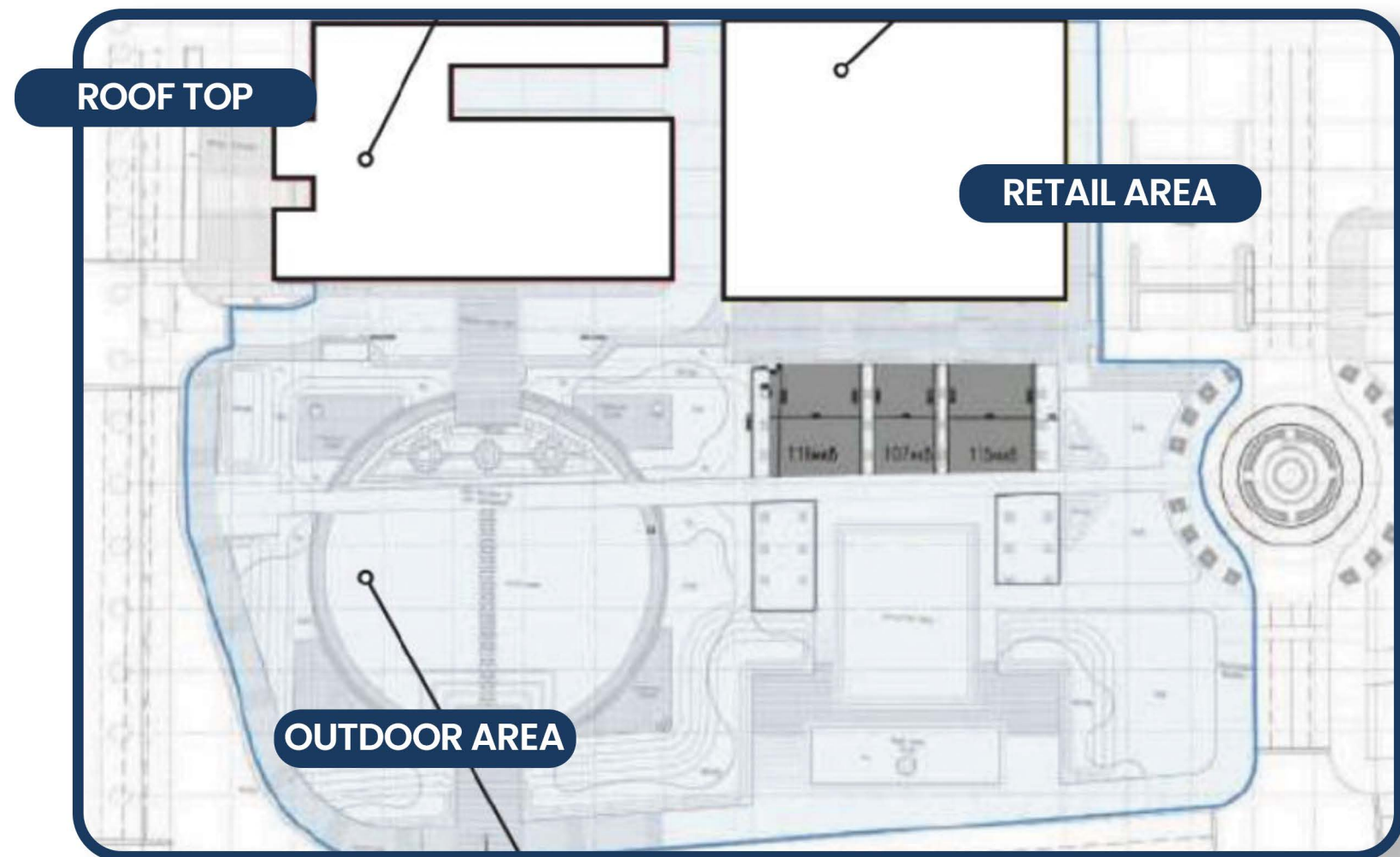
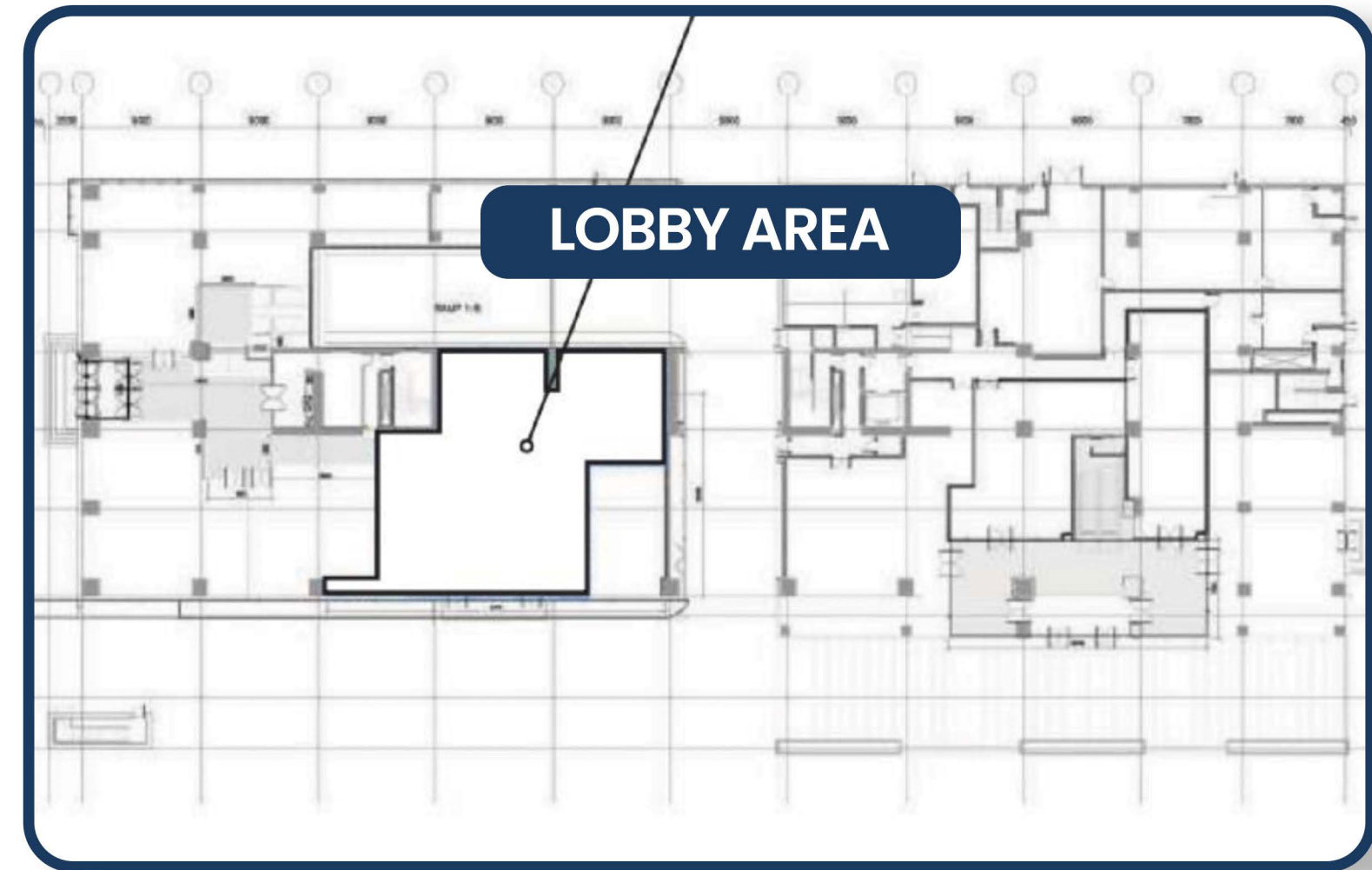


LOCATION

Only Retail Area
Lobby Area
Roof Top

DIMENSION

150'000MNT
200'000MNT
350'000MNT



VAT IS NOT INCLUDED



THANK YOU

